

CREATE
YOUR STYLE with
CRYSTALLIZED™
– Swarovski Elements

CASCADE LEATHER DROP BRACELET



LEATHER DROP BRACELET



CRYSTALLIZED™ – *Swarovski Elements*

Supplies & Tools

Article	Product Group	Article No.	Amount	Size	Colour	Colour Code
	Beads	5000	4 pcs.	4 mm	Air Blue Opal	285
	Beads	5000	6 pcs.	4 mm	Light Azore	361
	Beads	5000	4 pcs.	4 mm	Pacific Opal	390
	Beads	5000	1 pc.	6 mm	Light Azore	361
	Beads	5000	2 pcs.	6 mm	Pacific Opal	390
	Beads	5328	2 pcs.	5 mm	Chrysolite	238
	Beads	5328	2 pcs.	6 mm	Air Blue Opal	285
	Beads	5328	68 pcs.	6 mm	White Opal	234

Supplies

Embroidery thread, white, 0.4 mm, 2.5 m
 Hook and eye, silver, 1 pc.
 Leather, white, 30x20 cm
 Nylon thread, transparent, 0.15 mm, 1 m

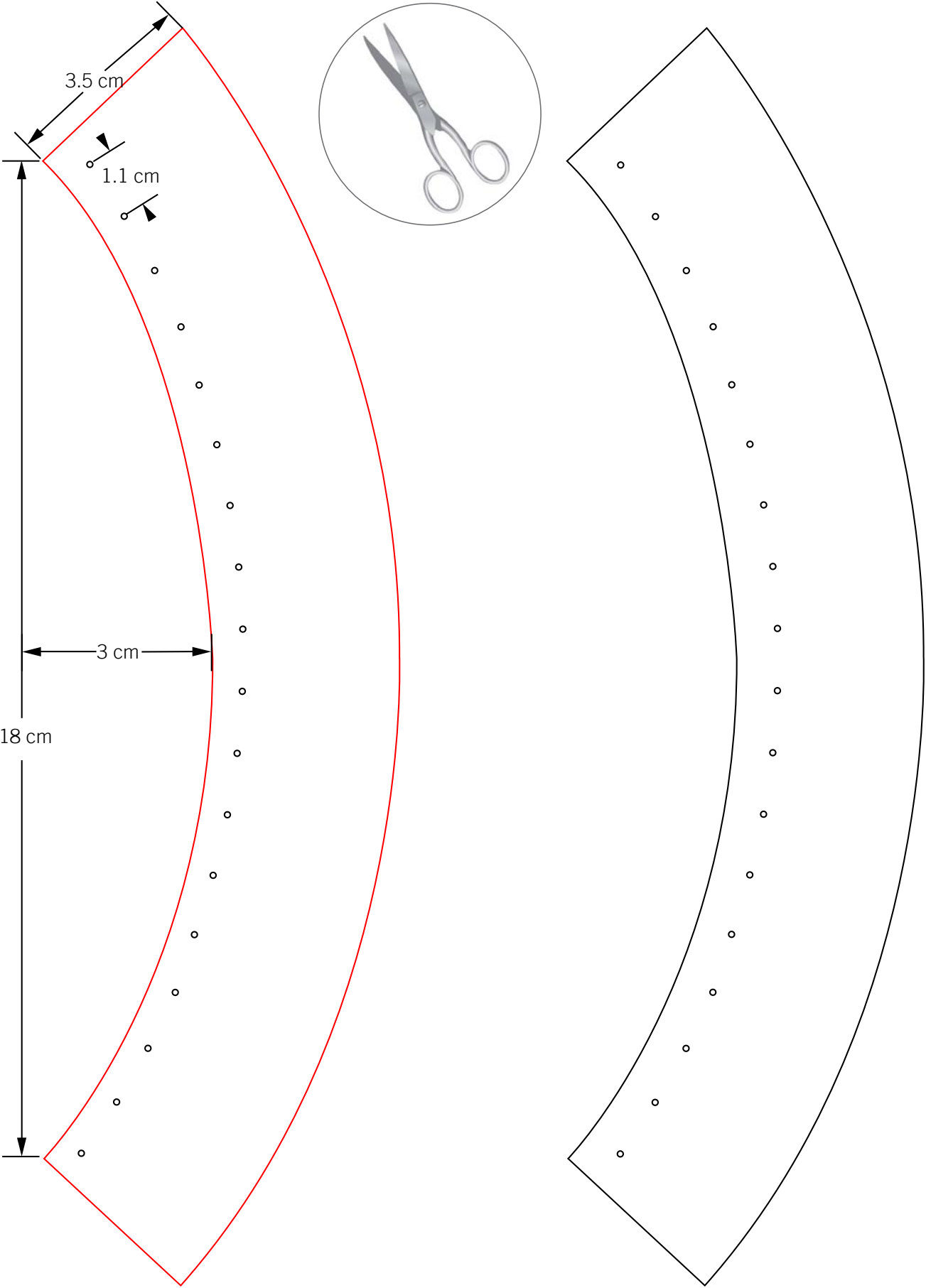
Tools

Beading needle
 Punching pliers
 Scissors
 Sewing needle
 Sheet of paper, A4, 1 pc.

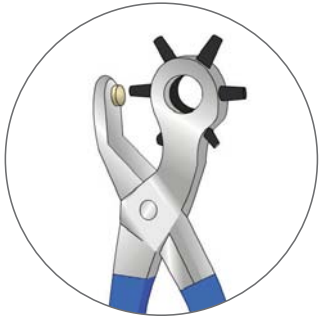
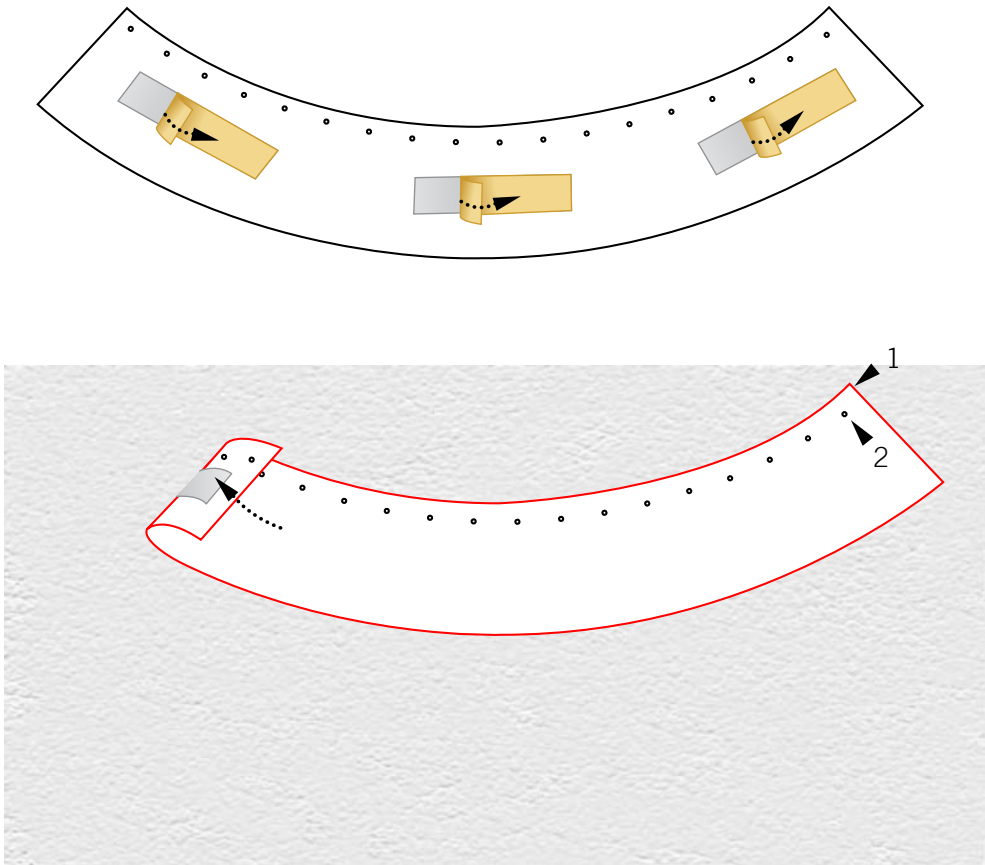
Level of Design: BEGINNER

Have also a look at the **text instruction** at the last page!

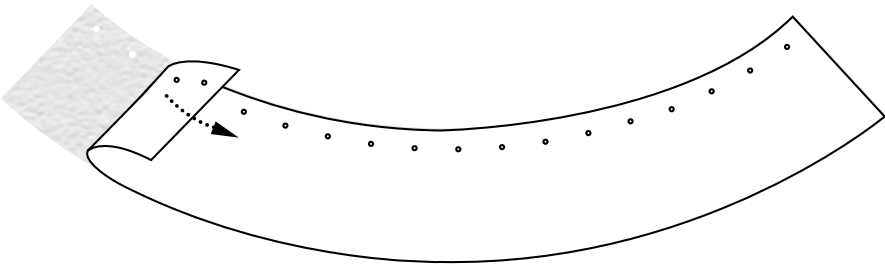
STEP 1



STEP 2



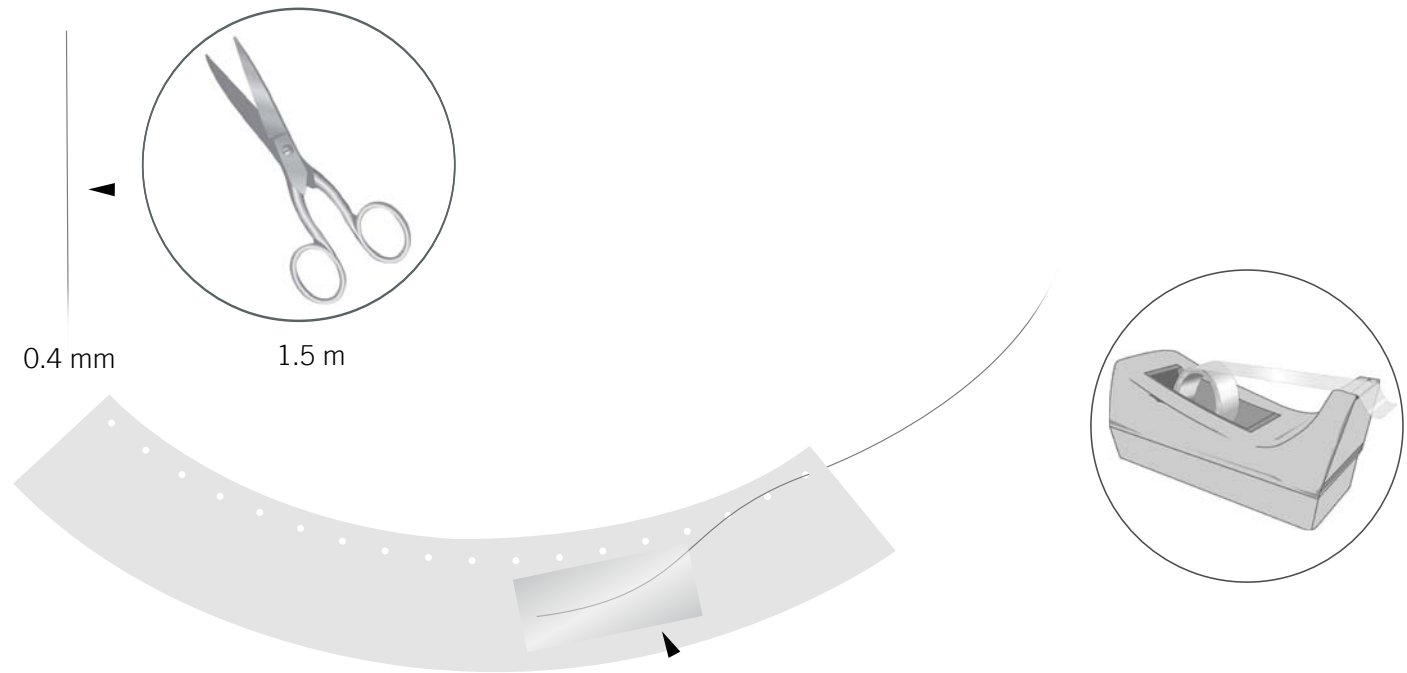
1:2



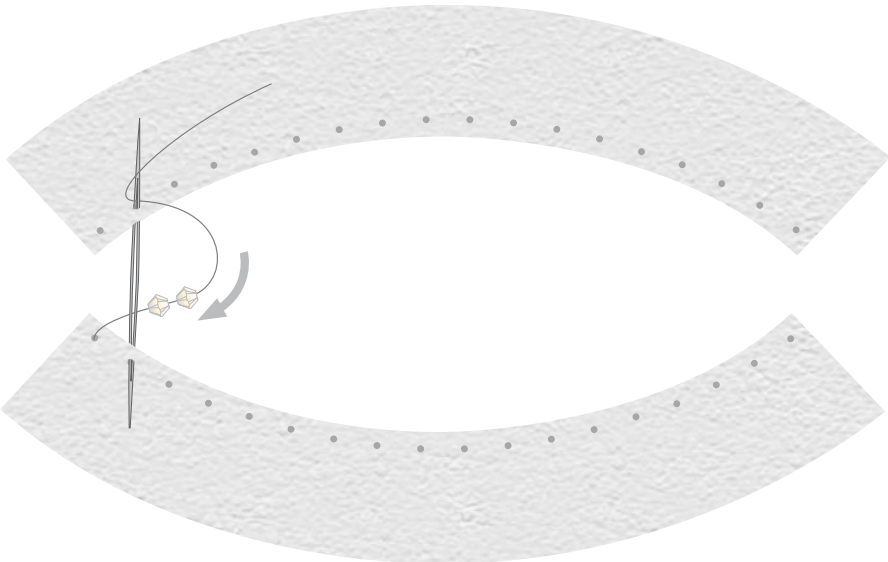
Repeat step x1:



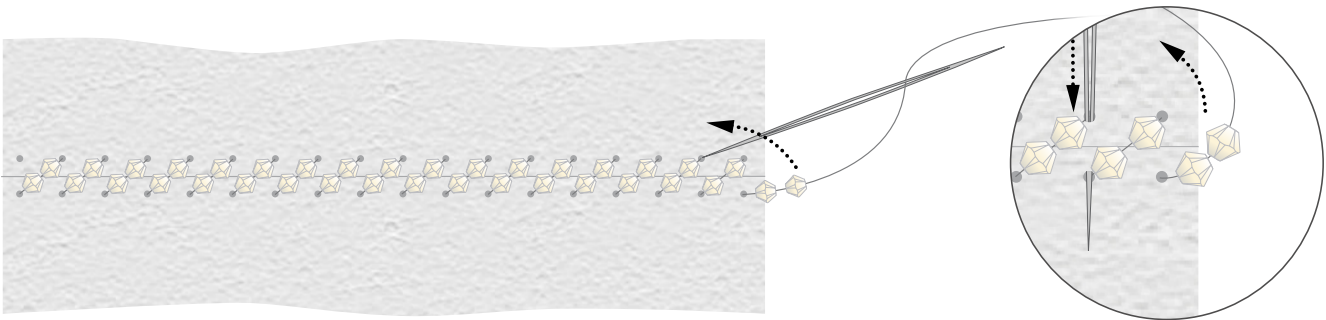
STEP 3



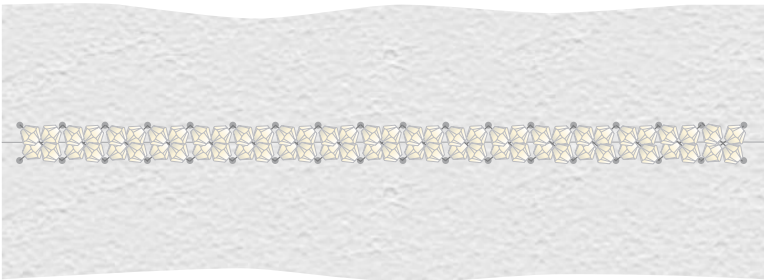
STEP 4



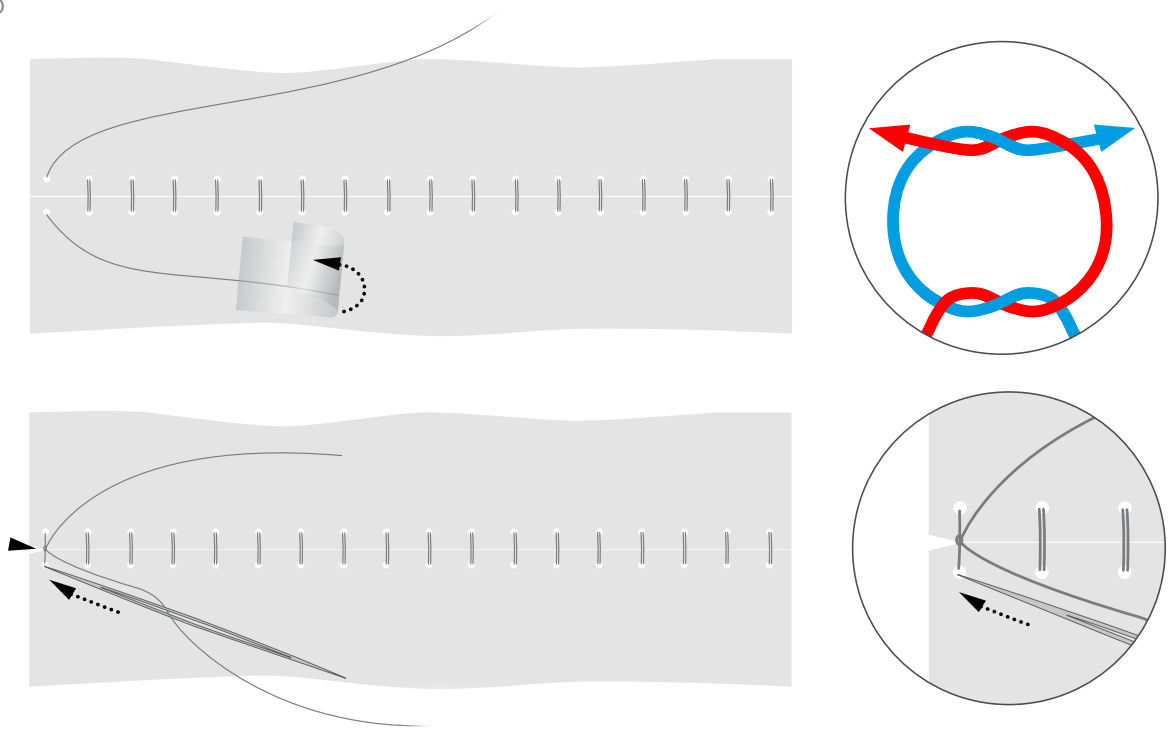
Repeat step x16



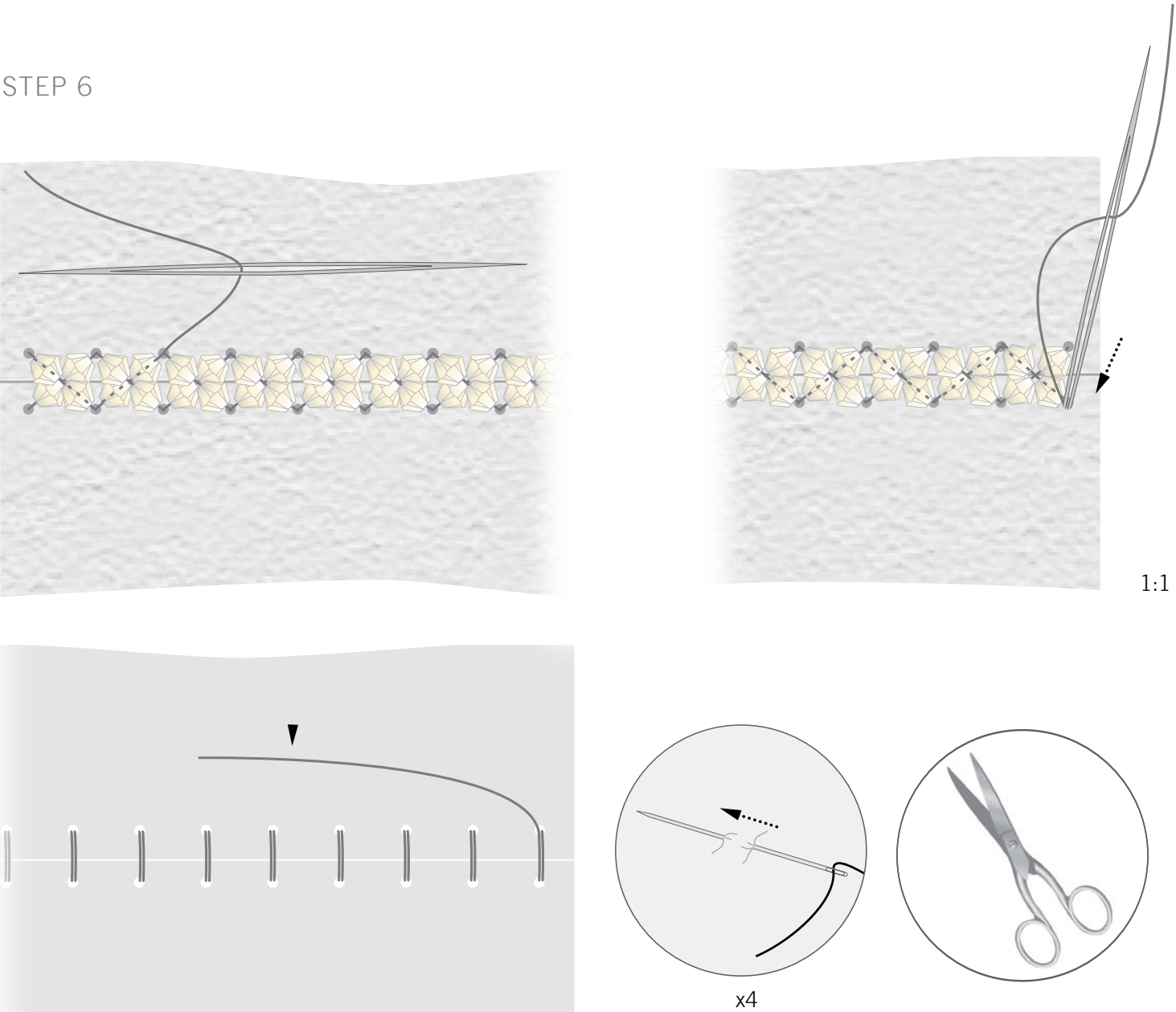
Repeat step x16:



STEP 5

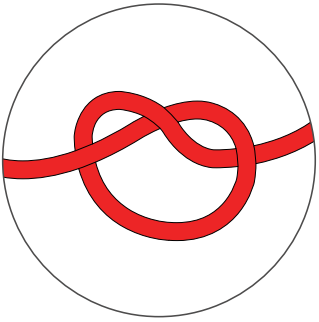
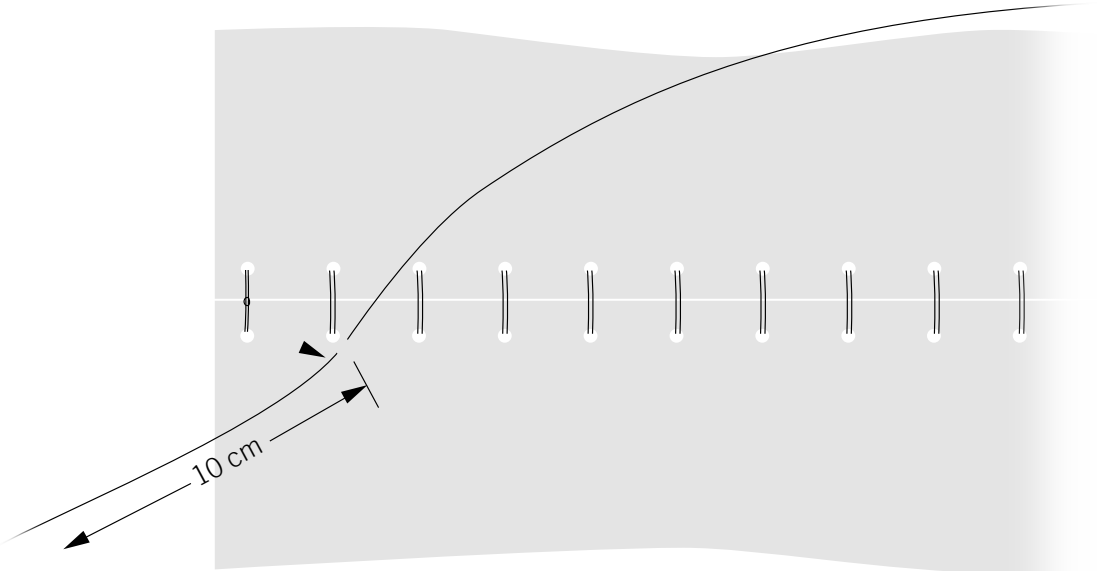
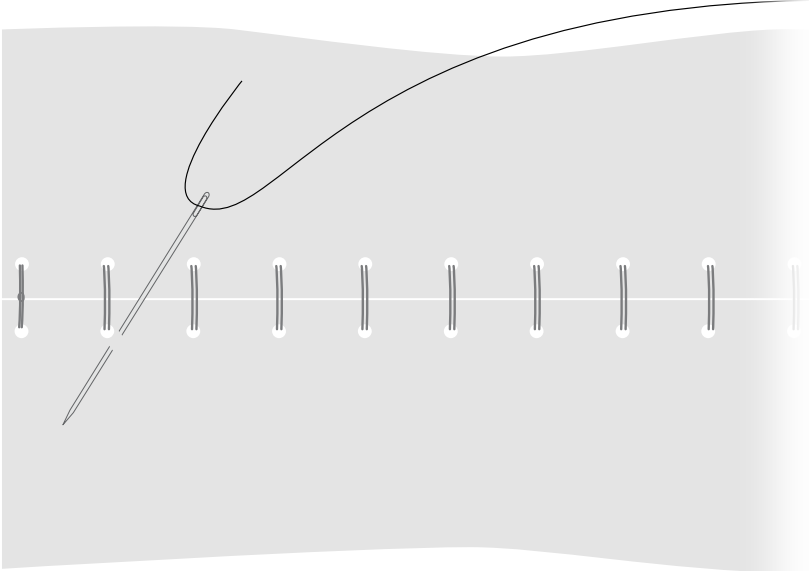
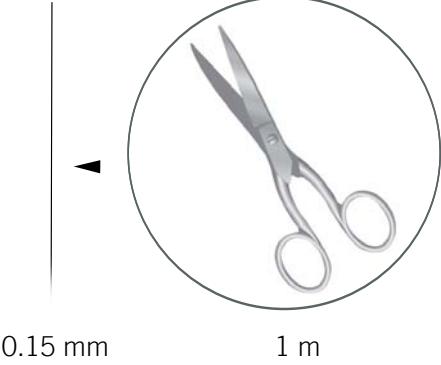


STEP 6

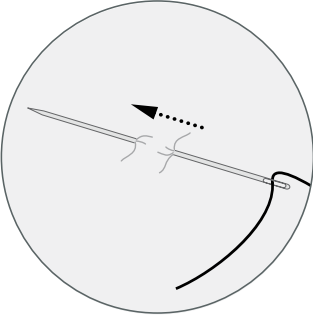
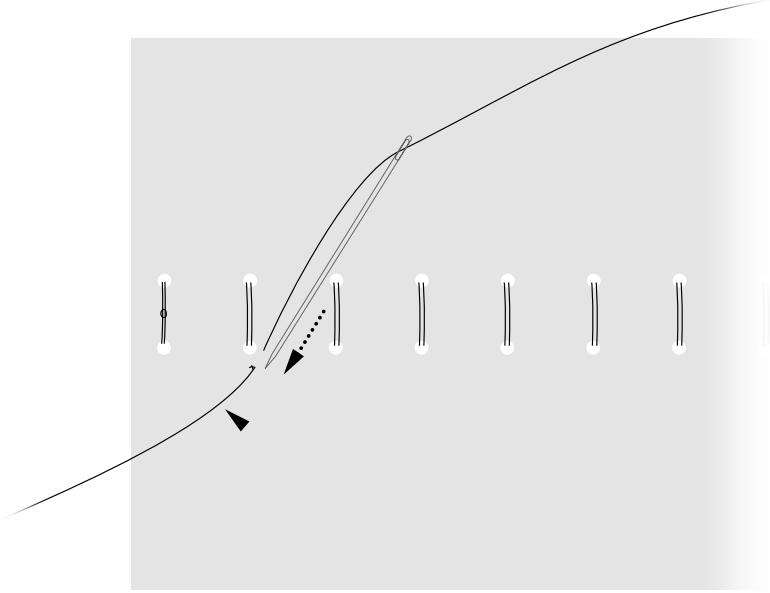


1:1

STEP 7



STEP 8

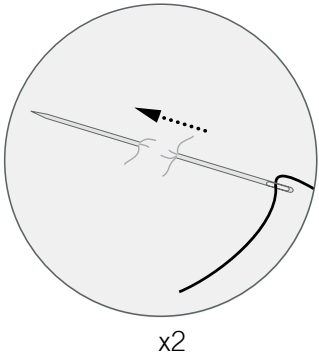
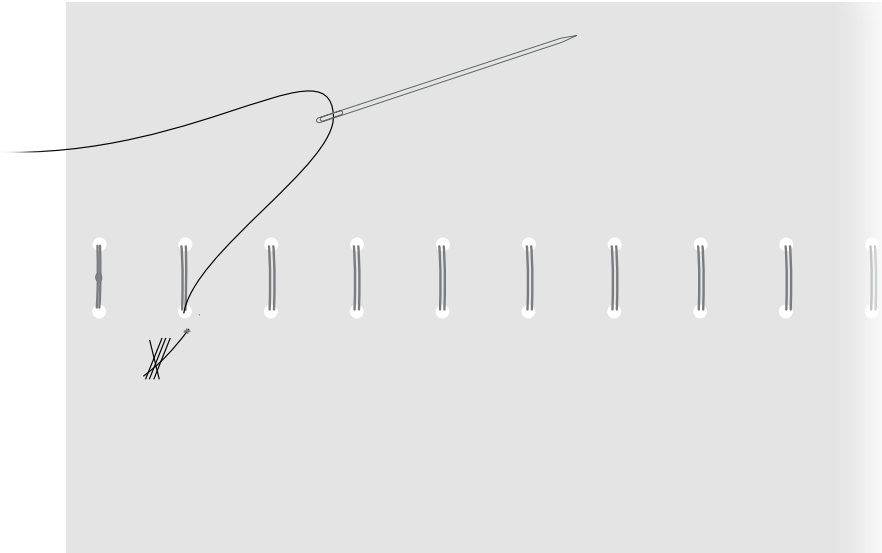
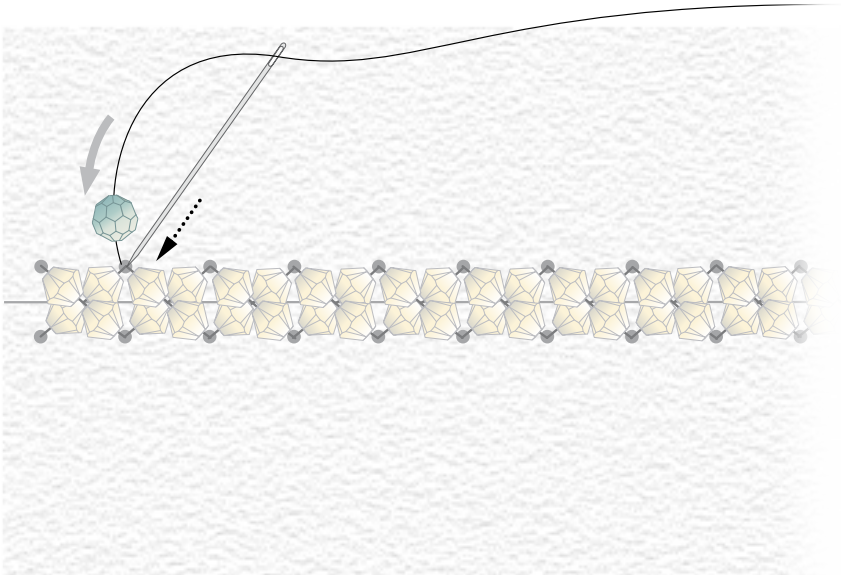


1 x4



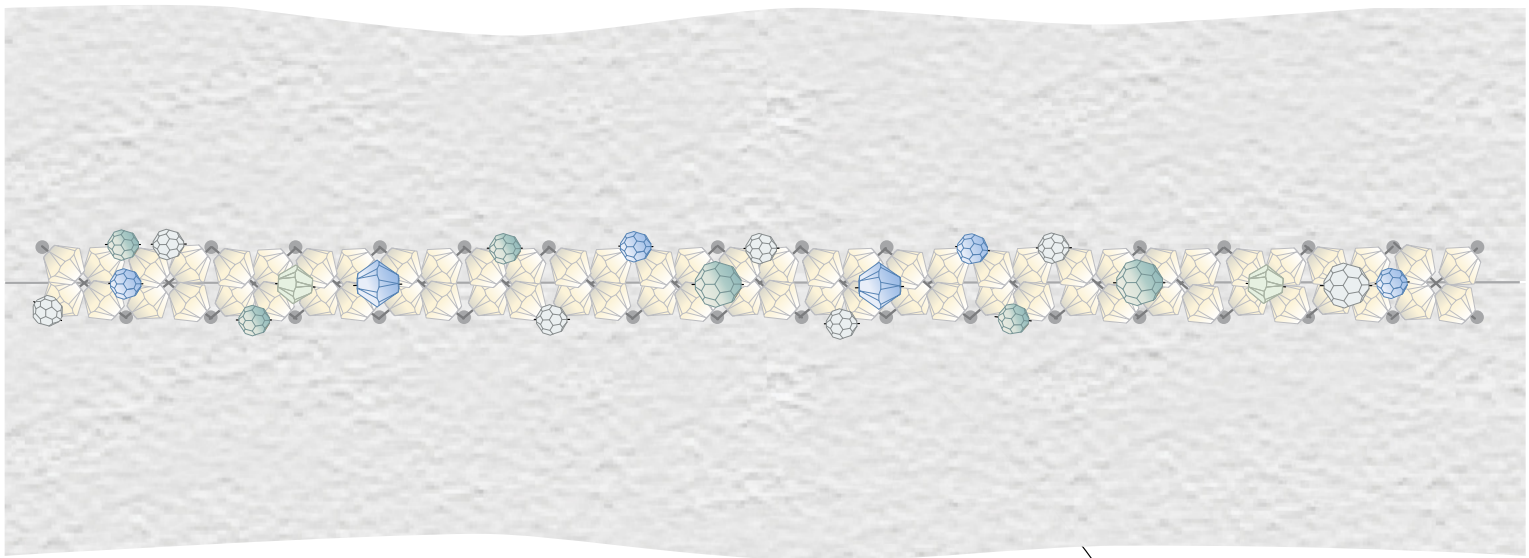
2

STEP 9

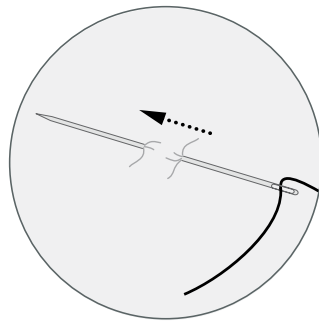


STEP 10

Repeat steps 7 - 9 x21:



1/2 ▶

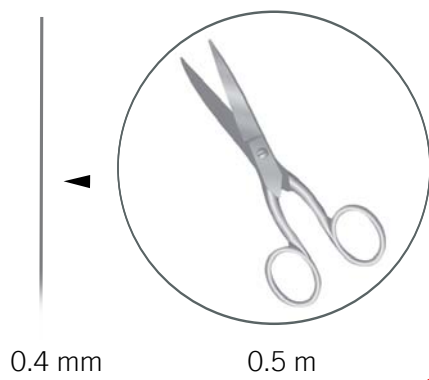


1



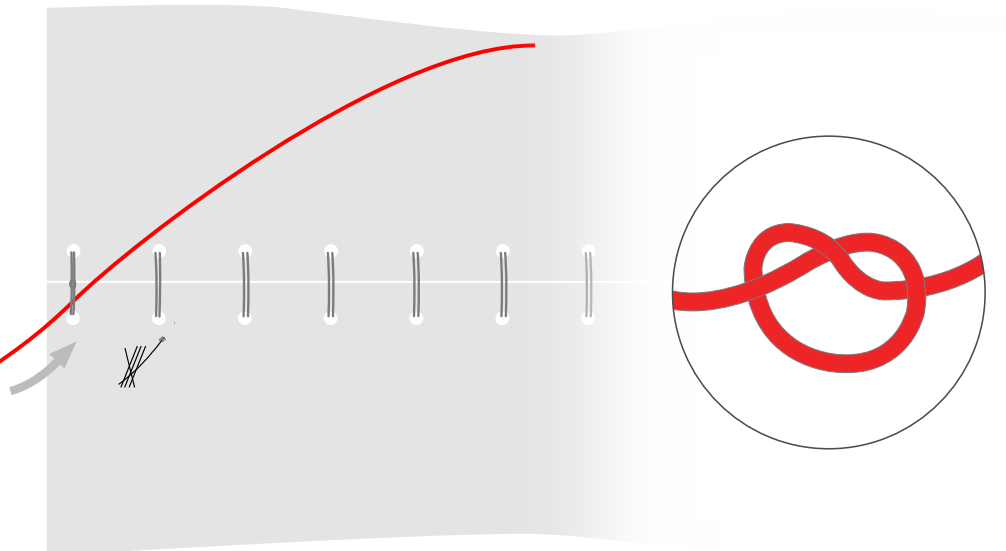
2

STEP 11

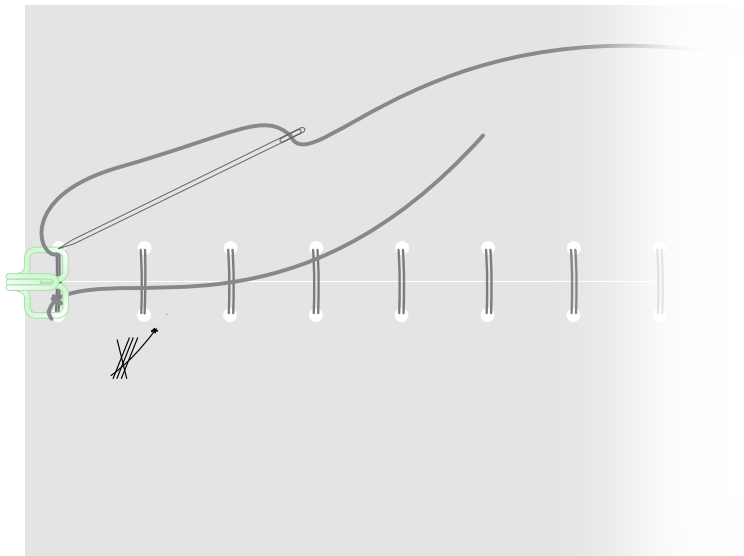
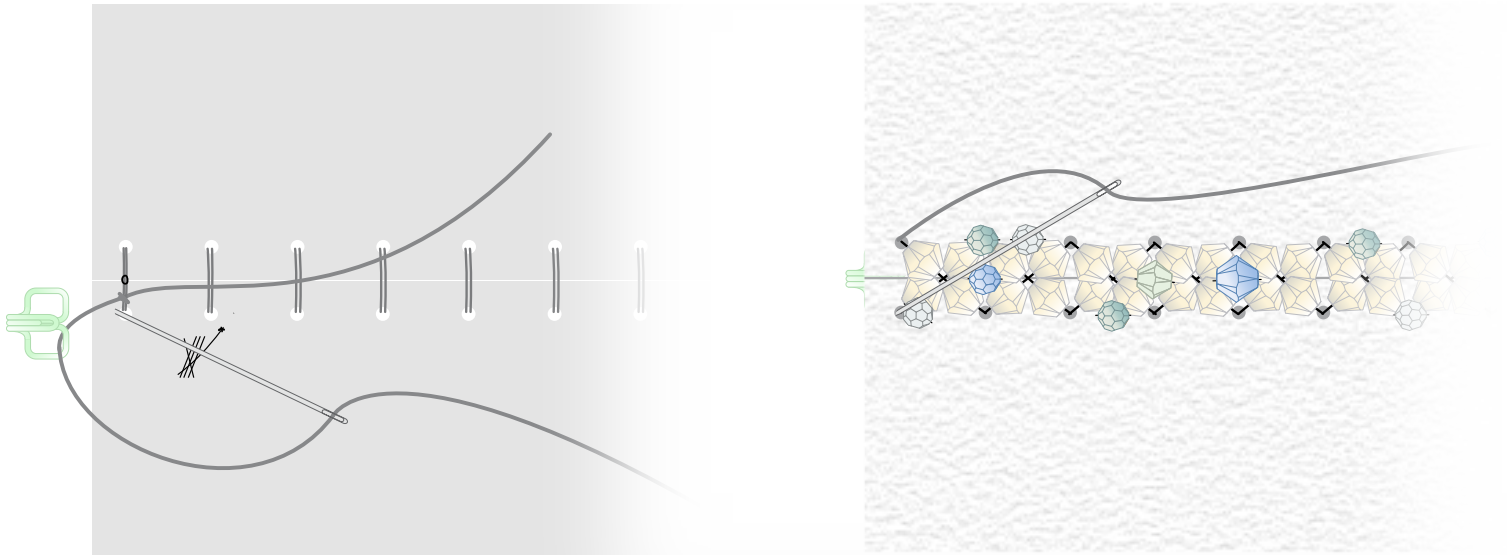


0.4 mm

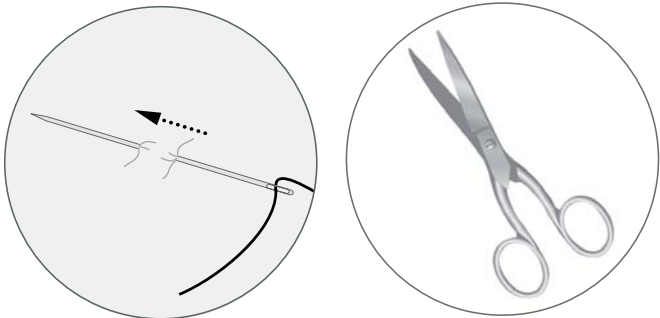
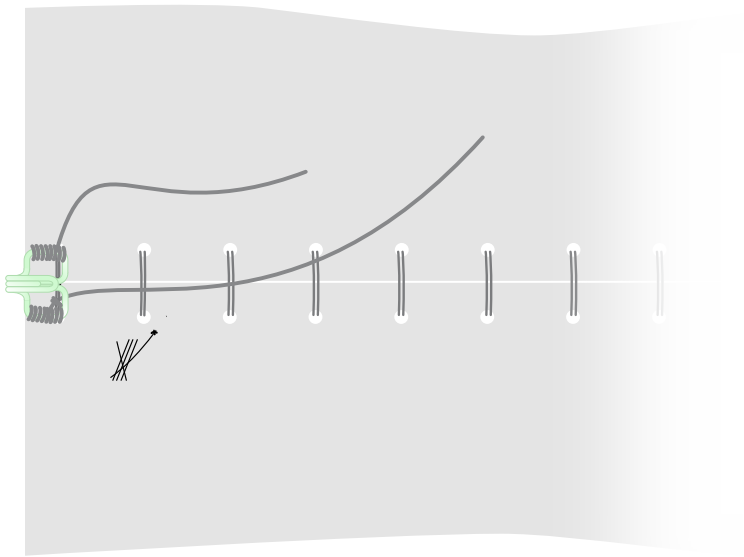
0.5 m



STEP 12



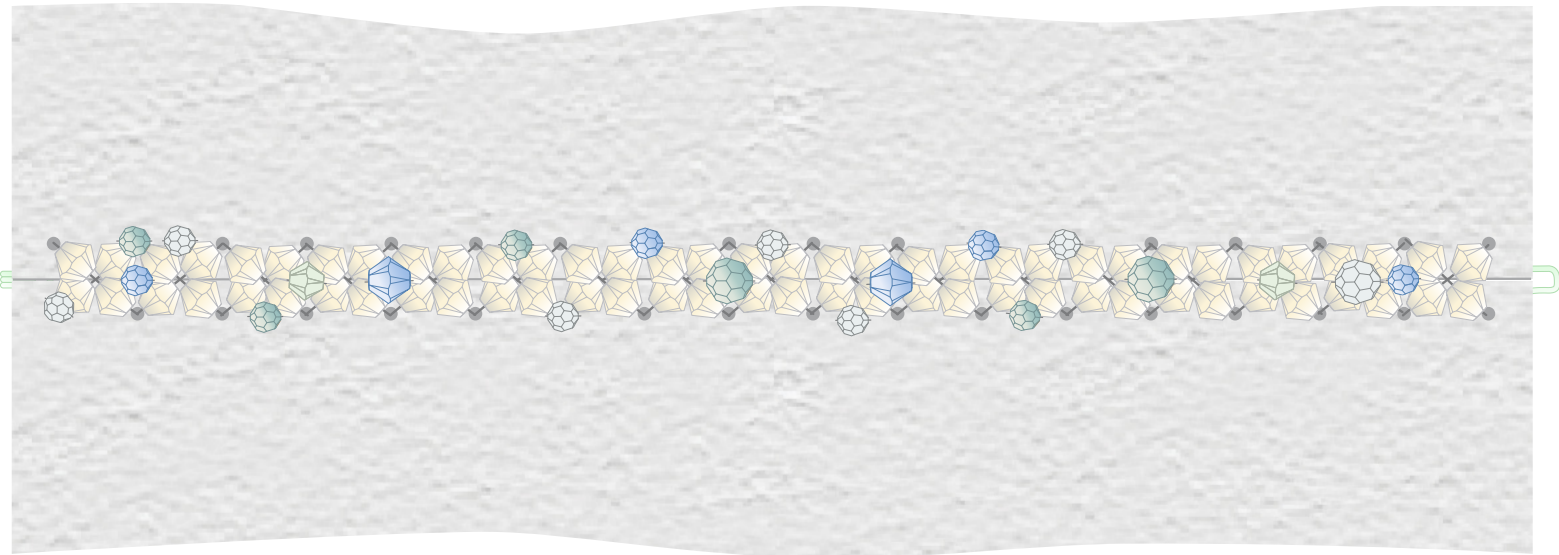
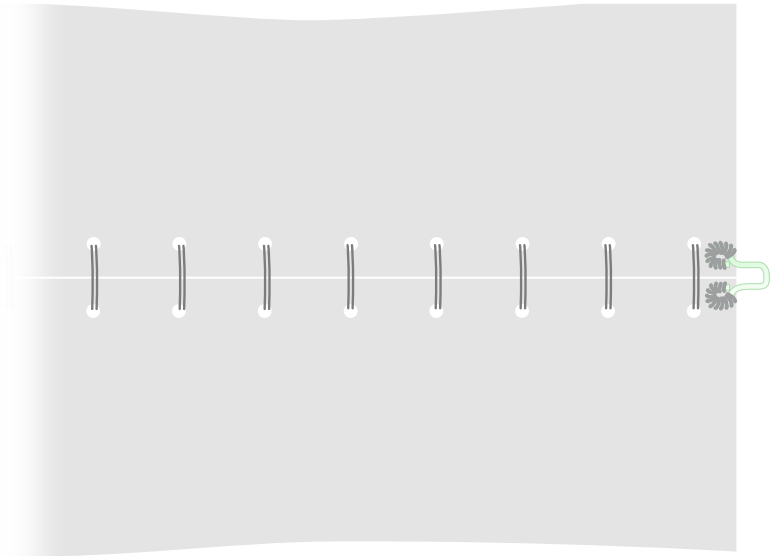
Repeat step x4



x4

STEP 13

Repeat step 12 x1:



CREATE YOUR STYLE with CRYSTALLIZED™ – *Swarovski Elements* Instruction Package
Cascade Leather Drop Bracelet

- Step 1: Print out pattern in step 1 and cut out part where the red marked line is.
- Step 2: Put some double sided tape onto back side of paper pattern, stick it onto the leather and cut out with scissors. Punch holes with punching pliers as you see in illustration. Remove paper pattern and repeat step to get a second piece of leather.
- Step 3: Cut 1.5m of 0.44 white embroidery thread and attach it on back side of one leather piece with some tape (see illustration).
- Step 4: Attach embroidery thread to needle, slide 2 CRYSTALLIZED™ Beads onto the needle and sew the two leather pieces together as you see in illustration. Repeat 16 times to attach all beads. When you reach the other end go back through the leather with embroidery thread to where you started.
- Step 5: Remove tape from back side and knot the two thread pieces together. Go with long thread end to front side again.
- Step 6: Go with needle and thread a second time through beads and make some back stitches afterward on back side to fix the thread and cut off excess with scissors.
- Step 7: Cut 1m of 0.15mm transparent nylon thread and make a stitch on back side of bracelet as you see in illustration. Leave short end with 10cm and fix this 10cm with a knot.
- Step 8: Make 4 back stitches with 10cm end to fix thread and cut excess off.
- Step 9: Go with thread and needle through one hole to front side and slide on one CRYSTALLIZED™ Bead and go back through same hole. Make 2 Back stitches on back side and repeat steps 7 - 9 x21 to fix all CRYSTALLIZED™ Beads.
- Step 10: Make some back some back stitches with thread to fix it and cut excess off.
- Step 11: Cut 0.5m of 0.4mm white embroidery thread and slide it through embroidery as you see in illustration and fix thread with a knot.
- Step 12: Take one part of clasp and sew it onto bracelet as you see in illustration. Make 4 back stitches and cut off excess with scissors.
- Step 13: Repeat step 12 once for second part of clasp.