

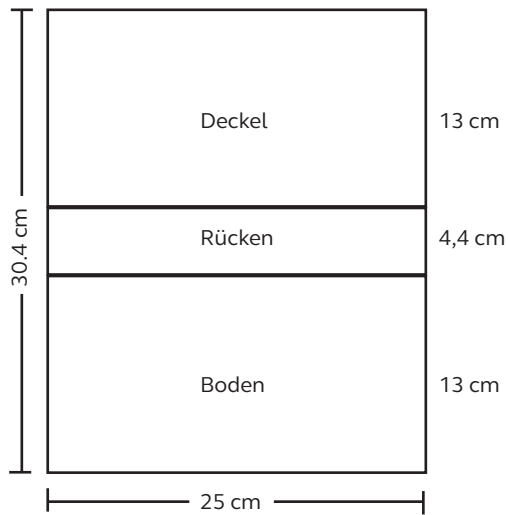
# KARTONSCHACHEL

Schnittplan Karton 3mm

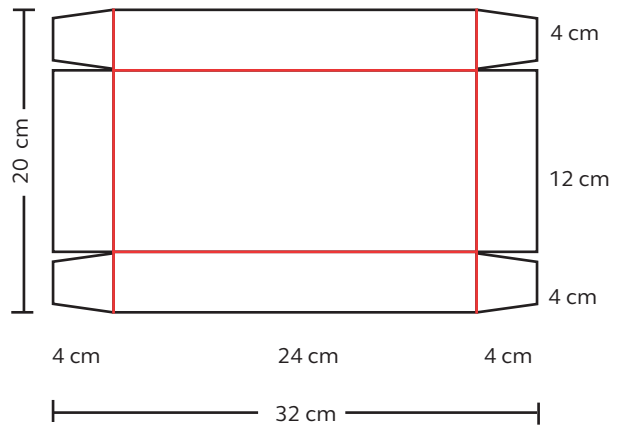
— Schneiden

— Ritzen

Hülle

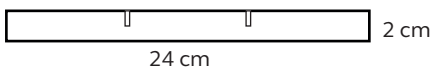


Schachtel

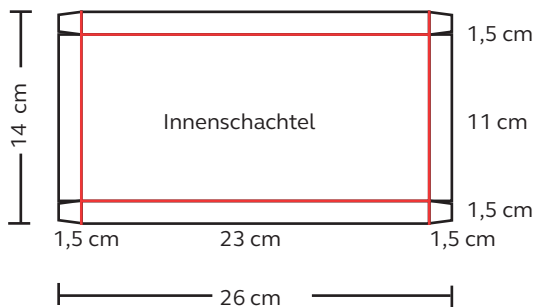
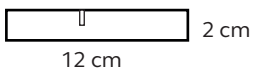
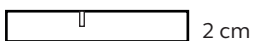


Innenfächer Variante 1

□ Lücke wegschneiden, 1 cm tief, 3 mm breit  
Abstand jeweils 8 cm

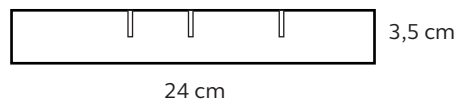
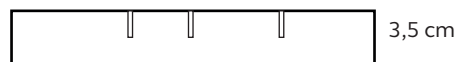


Abstand 5 cm - 7 cm

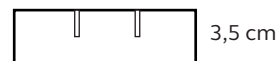
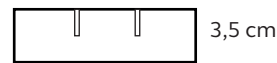


Innenfächer Variante 2

□ Lücke wegschneiden 1,75 cm tief, 3 mm breit  
Abstand 8 cm - 4 cm - 6 cm - 6 cm



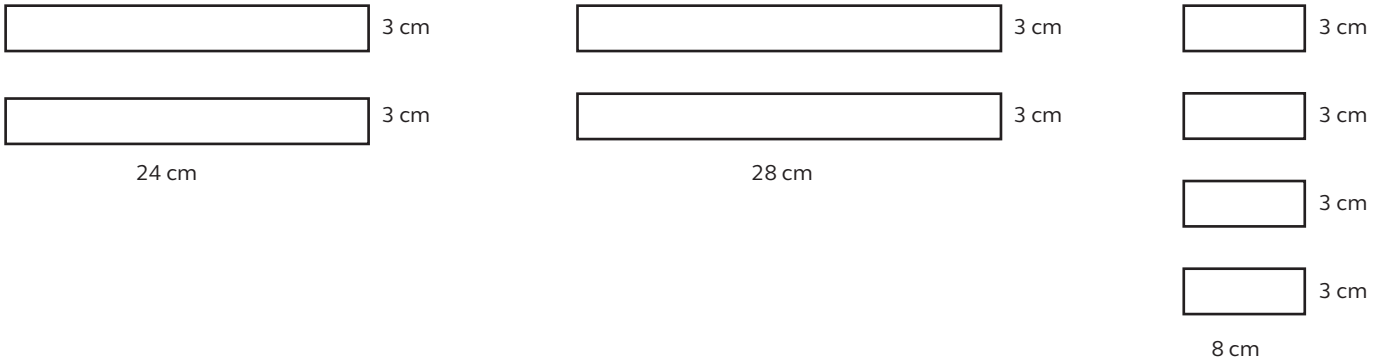
Abstand jeweils 4 cm



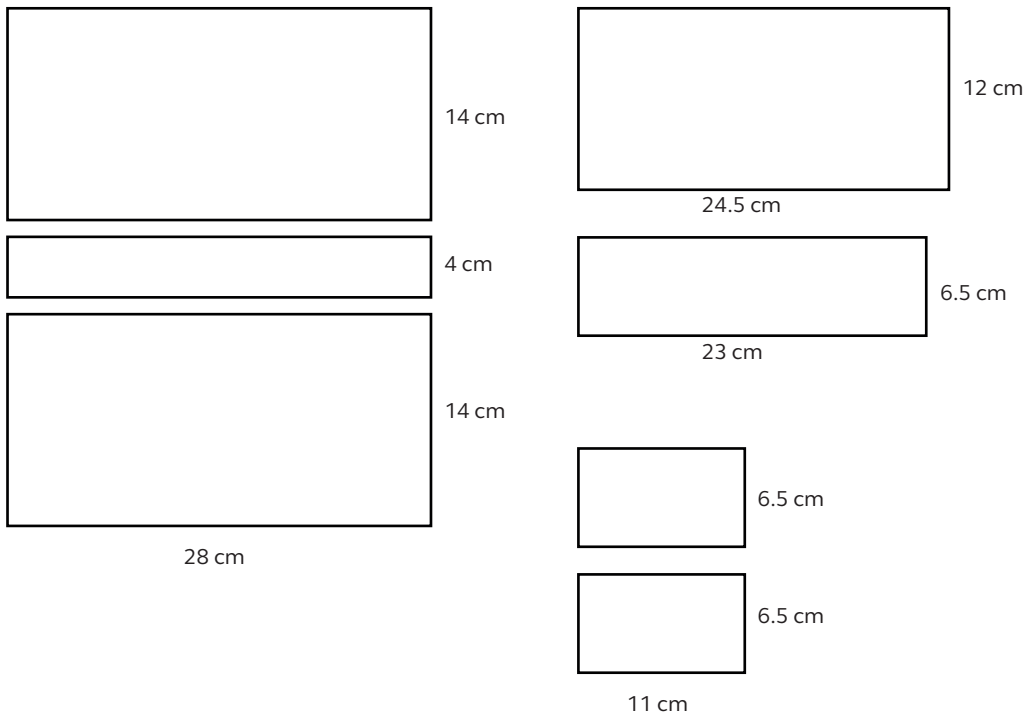
12 cm

# KARTONSCHACHEL

Schnittplan Buchbindergewebe (Leinwand)



Schnittplan Überzugspapier



Überzugspapier Innenfach nur Variante 1

---- einschneiden

